

CHaRM PRICES AND GUIDELINES

**** PLEASE NOTE:** There is a \$3 FACILITY USE FEE for every vehicle visiting the CHaRM to recycle materials. **

ELECTRONICS, ETC.

NEW! SAMSUNG CONSUMER ELECTRONICS

- No charge except for the \$3 facility fee!
See FAQs section for more info.

AUDIO EQUIPMENT

- Home Stereo Components: \$8
- Car Stereos: \$4

COMPUTERS & COMPUTER EQUIP.

- Monitors 19" or smaller: \$10
- Monitors 20" to 34": \$15
- Towers/CPUs: \$8
- Printers/scanners: \$8
- Laptops: \$4
- Uninterruptable Power Supply (UPS): \$8
- Large misc. computer equip.: 30¢/lb.
- Keyboards, mice, cables



PRINTER CARTRIDGES

- Ink jet and laser jet printer cartridges

COPIERS & FAX MACHINES

- Fax Machines: \$8
- Desktop Copiers: \$8
- Large Copiers (more than 40 lbs.): 30¢/lb.

PHONES

- Cell Phones
- Office Phones: \$4
- Home Phones: \$2



SMALL ELECTRONIC ITEMS

- PDAs, iPods, Walkmans and Gameboys: \$2
- Video Game Systems: \$4 – \$8 (depending on size)

TVs, VCRs & DVD PLAYERS

- TVs 19" or smaller: \$10
- TVs 20" to 34": \$15
- Consoles, TVs larger than 34": \$30
- VCRs/DVD Players: \$8
- Satellite Boxes: \$8



PLASTICS These hard-to-recycle plastics are not accepted in curbside bins.

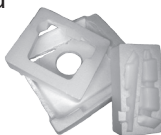
#2 & #4 PLASTIC BAGS

- #2 and #4 ONLY (newspaper bags, grocery bags, dry cleaner bags, etc.)
- MUST be clean, dry, and empty of all food, receipts, etc. with tape and stickers removed. NO sandwich bags, plastic food wrap or black bags. NOT accepted with curbside recycling.*



#6 WHITE BLOCK FOAM

- #6 White block foam packaging and rigid foam insulation only
- Businesses: \$6 per cubic yard
- NO packing peanuts, Styrofoam® cups or "to-go" boxes*



BIG DURABLE #2 PLASTICS

- Large plastics marked with a #2 such as plastic toys like Big Wheels® and plastic play structures, plastic lawn furniture, plastic watering cans, laundry baskets, clean #2 plastic buckets (no residue), crates, rigid backyard kiddie pools and plastic trash containers with a #2.
- In some cases, these plastics may not be marked with a #2, so look for them to be opaque with a matte finish and hollow inside. They are made with a mold, so will likely have a seam where two halves were joined.
- Please remove non-plastic parts. NO flower pots without a #2, inflatable pools or other inflatable plastics, water beds, chew toys, CD jewel cases, small toys such as action figures, etc.*



BICYCLES & PARTS

BICYCLES & BIKE PARTS

- Any condition
- Includes integral parts such as seats, pedals, handlebars, wheels, etc., and metal accessories such as baskets and Pannier racks
- NO other accessories or sporting goods*



BICYCLE TIRES & INNER TUBES

- Tires: \$0.50 each

MISCELLANEOUS

BOOKS & MANUALS

- Computer and office manuals
- Hard-bound books and paperbacks



COOKING OIL

- Such as canola, corn, vegetable, olive and sesame oils
- NO motor oil or any oil used for purposes other than cooking.*

FIRE EXTINGUISHERS

- City of Boulder Residents with ID: no charge for this item
- Non-Boulder Residents: \$4

PORCELAIN TOILETS, SINKS & URINALS

- Toilet, with non-porcelain materials removed: \$4
- Toilet, with non-porcelain materials attached: \$10
- Sink or urinal: \$2; With plumbing attached: \$5
- Porcelain MUST be as clean as possible. NO biohazards.*



YOGA MATS

- Plastic foam, rubber foam and jute yoga mats: \$1
- Mats must be clean. NO badly soiled, stained or smelly mats. NO tatami or grass mats. NO rugs or carpet.*

TEXTILES

ATHLETIC SHOES

- NO cleats, metal parts, zippers, mud or Keds-type canvas sneakers*



TEXTILES

- Reusable paired shoes (no mud)
- Clothing, bedding, towels, fabrics
- Items may be stained or ripped, but they must be clean. Must be 12" square or larger. NO bathing suits, underwear or socks*

FAQs

Q: Why is there a \$3 facility use fee in addition to the recycling fees that apply to specific materials?

A: The operating costs of the CHaRM have increased. To keep this important service going, we need financial support from you, our third partner, in addition to subsidies from Eco-Cycle® and the city of Boulder.

This fee also has an environmental benefit: We are encouraging recyclers to economize their trips and to bike their materials to the CHaRM. In fact, the CHaRM is right by the junction of the Goose Creek Path and the Boulder Creek Path, so it's easy to get to us. Plus, *bicyclists are not charged a facility fee!* (Material fees still apply.) Other ways to save include carpooling and purchasing our Frequent Recycler Card, which gives you five trips for \$10. It will never expire and it's virtual—we keep track of it at the CHaRM.

Cont'd on reverse side

Q: Why is there a fee for some materials?

A: All electronic items must be disassembled before they can be recycled, a labor-intensive process that often requires handling hazardous substances. The funds are also used to offset the costs of collecting, storing and marketing the materials.

“Free” electronics recycling events usually have a hidden, and toxic, price. The collected electronic scrap may be exported to developing countries where items and their dangerous components are dismantled under horrific conditions that are harmful to the workers, local community and environment. Learn more at www.ecocycle.org/charm.

Q: Why is it important to keep electronics out of the landfill?

A: Each television or computer monitor contains 3-8 pounds of lead, and like most electronics, also contains a host of other toxic substances such as cadmium, mercury and arsenic. These dangerous substances could contaminate groundwater when landfilled.

Q: Why are Samsung branded consumer electronics free to recycle?

A: Twenty-three states and dozens of countries around the world require electronics manufacturers to be financially responsible for recycling their old equipment through a principle called Extended Producer Responsibility. Until this approach takes hold in Colorado, consumers, local governments and processors like Eco-Cycle are left footing the bill for industry's discards, which is why it costs to recycle electronics at the CHaRM. Samsung has made the CHaRM an official partner in its voluntary manufacturer take-back program by paying the recycling costs of Samsung consumer electronic products. Information about other voluntary manufacturer take-back programs can be found at www.electronicstakeback.com.

Q: What happens to my electronic equipment after I drop it off at the CHaRM?

A: Newer working computers are donated to the Community Computer Connection, which helps bring computers to the underserved communities of Colorado. Obsolete electronics go to a local demanufacturing facility that is a certified e-Steward, a program that assures the highest level of environmental and social stewardship in the industry. Nearly 100% of your electronics' components are recycled into new products.

Q: What happens to the other items I drop off at the CHaRM?

A: Please visit www.ecocycle.org/charm to find out!

Q: Why are certain items “hard to recycle”?

A: Everything is recyclable in theory, but what determines whether a product is easy to recycle (like containers and paper) or hard to recycle (like electronics) is having a buyer, or market, for the materials. For a market to exist, there must be a manufacturer willing and able to process the material and create another use for it. The CHaRM works hard to seek out new and local markets for hard-to-recycle materials and to share our successes with recyclers throughout the United States and beyond.

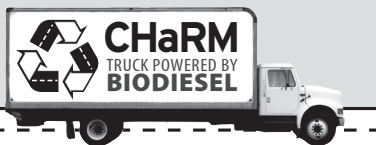
BOLDER BUSINESSES:

receive Hard-To-Recycle collection with

CHaRM on the Road

With CHaRM on the Road, we provide easy-to-store collection containers, CHaRM guidelines and free training for employees. Reduce waste, support new and local recycling markets, and prevent pollution—sign up today!

303.444.6634 ext. 2 • www.ecocycle.org/zws



Funded in part by City of Boulder Trash Tax Dollars.

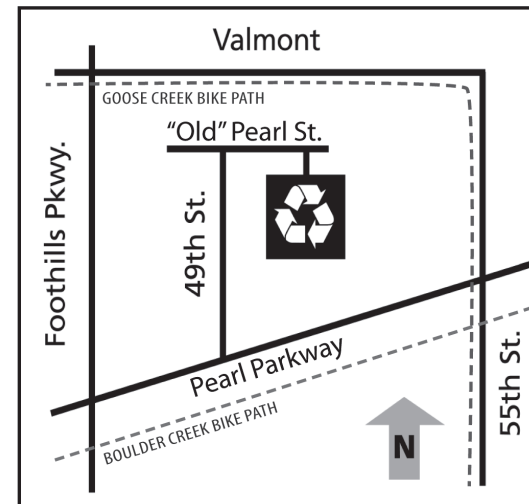


e-Stewards

Eco-Cycle® is a proud supporter of the Basel Action Network's (BAN) e-Stewards Certification, the world's most rigorous environmental and social justice criteria for recycling e-scrap. **All electronics are recycled domestically and responsibly.**

CHaRM

5030 “Old” Pearl St., Boulder
Monday - Saturday
9 a.m. - 4 p.m.



Printed on 100% post-consumer recycled paper.



Working to Build Zero Waste Communities

303.444.6634 • www.ecocycle.org

Eco-Cycle®/City of Boulder

CHaRM

Center for
Hard-to-Recycle
Materials

Materials collected,
guidelines, prices, FAQs and map

